



**SmartInsights**  
Insightful Analytics as-a-Service

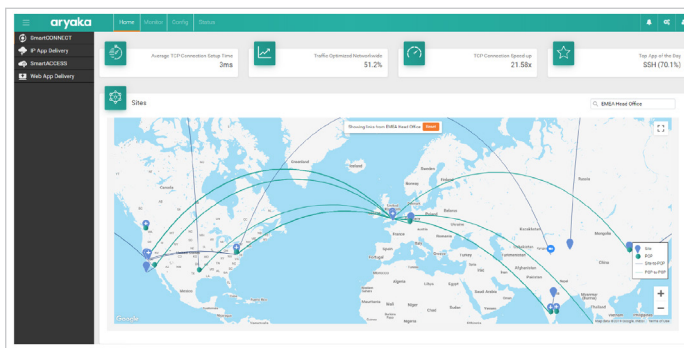


**Get intuitive and quick to action visibility and analytics in a single pane of glass.** Aryaka provides a fully managed SD-WAN delivered as a service for global enterprises that delivers significantly better performance for cloud and on-premises applications for enterprise datacenters, branch offices and remote/mobile employees anywhere in the world.

SmartInsights provides deep insights into the state of a customer's WAN accessible via MyAryaka, a cloud-based orchestration and visibility portal that gives customers the ability to configure, control and manage all Aryaka's Managed SD-Service. Ensuring networks are set up, configured and remain optimized at scale in an increasingly distributed IT environment is paramount for any enterprise.

The MyAryaka Cloud Portal also offers deep, end-to-end network and application visibility for your business, and provides APIs for graph data as well as an option to embed URLs which can be used to integrate to customer's existing visibility tools.

Application-aware network Analysis tool	Status, Performance, Optimization and Reporting
Cloud-based Orchestration	Centralized Configuration and Order Management
Reporting Metrics	Utilization insights, Health and Last Mile Insights

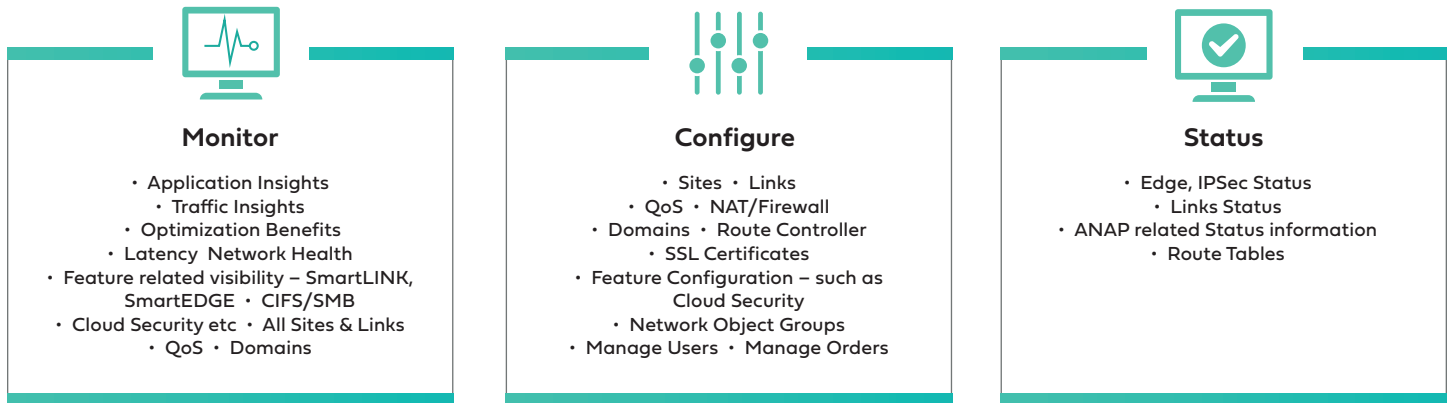


SmartInsights provides visibility and insights across all Managed SD-WAN Services

- SmartManage
- SmartConnect
- SmartOptimize
- SmartCloud
- SmartSecure

## Monitor, Configure, Get Status, and Generate Reports in Real-time

Customers have real-time access and visibility to monitor, configure, get status updates with highly granular views. Below table provides a high-level overview of SmartInsights metrics and information accessible via the MyAryaka Cloud Portal. For a complete list, log in to <https://my.aryaka.com>.



The images in Figure (2) illustrate how customers can monitor in the below case Latency and Top Applications information, with the time period fully customizable to allow for user defined visibility and analytics requirements.

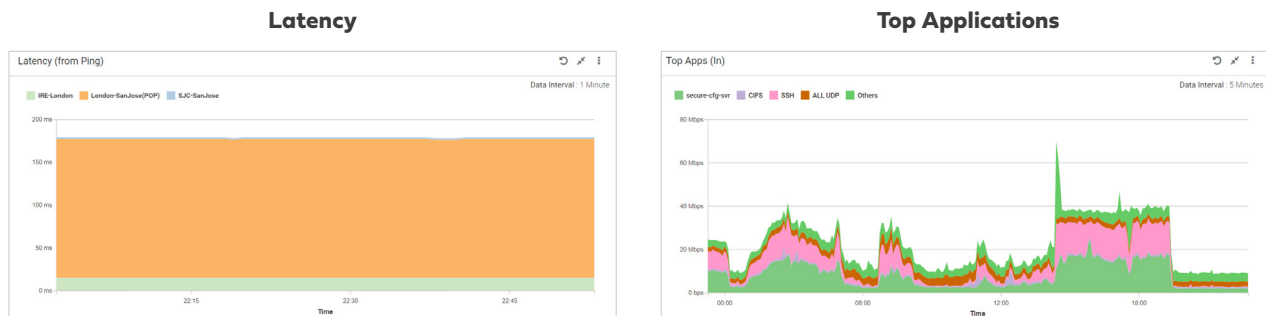


Figure (2): Latency and Top Applications Charts

## MyAryaka Cloud Portal Overview

The MyAryaka Cloud Portal, built on a scalable open-source application architecture, supports:

**Intuitive UI:** A redesigned portal makes the user experience more intuitive and comes with greater performance. Provides access to APIs.

**Responsive Design:** The MyAryaka portal automatically adjusts for phones, tablet and computer screen sizes so you get the best viewing experience on any device.

**Easy-to-use Help Function:** Find faster help on topics you need for a better experience.

**Leading Web Browsers:** Chrome, Firefox, Safari, Edge, Opera

### World-class Support and Help 24/7

With a comprehensive online help function, customers have access to a wide range of topics for resolving issues quickly. In case support is needed, Aryaka's world-class customer support is available 24/7 via call or email [support@aryaka.com](mailto:support@aryaka.com).

### About Aryaka Networks

Aryaka delivers the #1 fully-managed, end-to-end global SD-WAN service for the cloud-first era. Our unique technology integrates multi-cloud connectivity, application optimization, security, last-mile management and visibility into an SLA-driven OPEX-only solution that provides unmatched agility and improved TCO for the global enterprise.

LEARN MORE: [info@aryaka.com](mailto:info@aryaka.com)